

THE *Camellia*
REVIEW

A Publication of the Southern California Camellia Society



Vol. 47

March-April, 1986

Two dollars

No. 4

Southern California Camellia Society Inc.

An organization devoted to the advancement of the Camellia for the benefit of mankind — physically, mentally and inspirationally.

The Society holds open meetings on the Second Tuesday of every month, November to April, inclusive at the Hall of Environmental Education, Arboretum, Arcadia. A cut-camellia blossom exhibit at 7:30 o'clock regularly precedes the program which starts at 8:00.

Application for membership may be made by letter to the Secretary. Annual dues, \$15.00

OFFICERS — 1985-86

SERGIO BRACCI, President
5567 N. Burton Ave., San Gabriel 91776
Tel. (818) 286-4338

WARREN DICKSON,
Secretary-Treasurer
1935 Apex
Los Angeles, CA 90039
Tel. (213) 661-8453

CHUCK GERLACH, Vice-President
3721 Cedarbend Dr., La Crescenta 91214
Tel. (818) 248-3838

MILTON SCHMIDT,
Foreign Representative
1523 Highland Oaks Dr.
Arcadia Ca. 91006
Tel. (818) 446-5525

DIRECTORS

DEAN ALLTIZER
1253 Bruce Ave., Glendale 91202
Tel. (818) 241-1211

JERRY BIEWEND
1370 San Luis Rey, Glendale 91208
Tel. (818) 242-8622

MELVIN BELCHER
6025 Brydon Rd., LaVerne 91750
Tel. (714) 593-4894

SERGIO BRACCI
5567 N. Burton Ave., San Gabriel 91776
Tel. (818) 286-4338

JULIUS CHRISTINSON
3751 Hoover St., Riverside 92504
Tel. (714) 688-1547

WARREN DICKSON
1935 Apex, Los Angeles 90039
Tel. (213) 661-8453

CHUCK GERLACH
3721 Cedarbend Dr., La Crescenta 91214
Tel. (818) 248-3838

WALLY JONES
2220 Fisher Ct., Redondo Beach 90278
Tel. (213) 372-7550

GRADY PERIGAN
1380 Winston, San Marino 91108
Tel. (818) 792-0829

GLENN SMITH
695 Winston Ave., San Marino 91108
Tel. (818) 792-9914

JOHN UTVICH
2975 Somerset Place, San Marino 91108
Tel. (818) 286-5555

DAVE WOOD
2434 Allanjay Place, Glendale 91208
Tel. (818) 247-1986

HONORARY LIFE MEMBERS

HAROLD E. DRYDEN
COLONEL TOM DURRANT
WILLARD F. GOERTZ
BERNICE GUNN

JOSEPH NUCCIO
JULIUS NUCCIO
CARYLL PITKIN
WILLIAM E. WOODROOF
A. WILKINS GARNER

FOREIGN REPRESENTATIVES

MAURIE S. POWELL
P.O. Box 234, Waikanae Beach, New Zealand

BRUCE ROSE
7 La Boheme Ave. Caringbah, N.S.W. Australia 2229

The **CAMELLIA REVIEW**: Glenn Smith, Editor, 695 Winston Ave., San Marino 91108
Tel. (818) 792-9914

PUBLISHED BY THE SOUTHERN CALIFORNIA SOCIETY, INC.

Copyright 1986

Four issues per volume—September, December, February, and May.

All manuscript for publication and correspondence should be sent directly to the Editor. Republication permitted, if due credit is given the Camellia Review and the author.

CHANGE OF ADDRESS: Notify the Secretary at once. Magazines are not forwarded by the Post Office.

TABLE OF CONTENTS

Vol. 47

March-April, 1986

No. 4

Camellias As A Living Memorial, Margaret Macdonald-Ingram	9
Contributors To The Camellia Nomenclature Fund	5
Contributors To The Camellia Review Fund	5
A Discussion Of Bloom Size Variation, Bill Woodroof & Bill Donnan	6
Hey Mom! We're Home!, Howard E. Burnette	8
Letter To The Editor, Milton H. Brown	10
Pacific Meeting, Grady Perigan	6
Please Listen To Me	10
Pomona Valley Performers, Marilee Gray	11
Show Results — Central California, Delta, Huntington, Kern, Pomona, South Coast, San Diego and Temple City	14

COVER PHOTO

Betty's Beauty . . .

Sport of Betty Sheffield Supreme. White with each petal edged light orchid.
(U.S. 1975 — F. Moore, West Covina, Cal.) Photo by Donnan. Color separations courtesy Nuccio's Nurseries, 3555 Chaney Trail, Altadena, CA 91011.

AN INVITATION TO JOIN

THE SOUTHERN CALIFORNIA CAMELLIA SOCIETY

The Southern California Camellia Society will welcome you as a member.
For your convenience an application blank is printed below.

ANNUAL MEMBERSHIP — \$15.00

**Includes Subscription to Camellia Review — Four issues per year and
revised 1984 edition of "Camellia Nomenclature" — 150 pages
with descriptions of over 4,000 camellias**

Please Make Payment to:

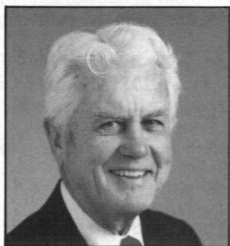
SOUTHERN CALIFORNIA CAMELLIA SOCIETY

P.O. Box 50525, PASADENA, CA 91105

Name _____

Address _____

City, State and Zip Code



THOUGHTS

from the editor

If possible, the Camellia Rama XI exceeded their own high standards this year. The hospitality on Friday was marvelous and did you ever see such blooms as were used to decorate the hospitality rooms. Magnificent!

Saturday's sessions tried an informal seating arrangement that worked well and the talks, panels, and presentations were all interesting — not too lengthy and everything went on schedule.

The costume party seemed unusually good. Grady Perigan took a batch of pictures which appear in this issue. It is too bad all the participants couldn't have a picture. Perhaps arrangements could be made next year by the Central California Camellia Society to submit black and whites of all.

Wilbur and Mary Anne Ray, the Art Gonos family and all who helped are to be congratulated and thanked.

MEMBERSHIP LIST

We hope to print the revised list in the next issue. Please send in any changes in spelling, address or telephone.

For the mailing service convenience, it seems better to leave the listings as is — Mr. and Mrs. John Doe — but we suggest you may wish to list your wife's name in brackets — Mr. and Mrs. John Doe (Mary).

Mail changes to Warren Dickson, 1935 Apex Avenue, Los Angeles, CA 90039.

WRITERS WANTED

**SEND ARTICLES, COMMENTS, CLIPPINGS,
SUGGESTIONS — ANYTHING OF INTEREST
TO YOU OR OTHERS**

**INCLUDE BLACK & WHITE
PICTURES IF POSSIBLE**

Pacific Meeting

Talk by Grady Perigan

I began my hobby of camellias in the early 40's. I worked for the telephone company starting in 1941. I worked out of Pasadena and in the wintertime the telephone lines in and around Descanso Gardens would get worn in the trees, get wet and then go dead and we would have to go up there to repair them. When I was there I saw all the little camellias that Manchester Boddy had purchased from the Japanese nurserymen who were displaced and put into camps during World War II. I was fascinated with the flowers; that is how I got started with camellias. Later on I saw Nuccio's Nursery up on Chaney Trail and I recognized the name from high school. I went in and sure enough it was Joe whom I knew, having played football with him at Alhambra High School. I was always interested in the flowers but when I started my hobby we didn't have these plastic containers and we therefore had to get whatever we could to plant in. Some of my early camellias I did plant into the ground and when they got a little larger I then learned to graft. At first I didn't get very good advice. I was told to use my own soil, which I did. I mixed it with some peat moss but my camellias didn't grow too well. Although my soil was good for the camellias in the ground it didn't work too well for those in the containers. I picked the flowers and took them to the shows and didn't have too much luck in winning, so I began to wonder. I then went back up to Nuccio's. They were just getting started with their fir bark and Joe showed me how they mixed the bark with Devil's Gate dam soil. That is what I began to use and I still use it, mixed 50% to 50%. From then on my camellias perked up and I began to win a few trophies.

I found, however, that I was winning the most with the flowers of plants that were in the ground. Plants in the ground produce the best, but if you

have to raise them in tubs and containers, then do the best that you can.

If you are raising blooms for show flowers, I have found that you should find the ones that do the best for you in your area, and have maybe two or three of the same plants and you have a better chance of having a show flower on the date of the show.

I have made it a point of always trying to win in different categories, and not specialize, that is why I have both large, miniature and small. I think that it is important to take your best flowers to a show but the public is not that discriminating in looking at the blooms. They like to see the beauty of the show. One time a lady came over to me and asked where she could buy a plant of the flower that she saw that had the brown spots on it (petal blight).

A few years back I had to move to a different location so I had to leave all my plants that were in the ground and take only a certain amount of potted plants with me. I found out that there is quite a difference in climate, soil, amount of trees, shade and exposure. We have always heard that camellias like shade, but I believe that they like a little more sun than we have given them credit for. When there is too much shade they don't set enough buds and they don't have as good flowers. In the last 5 years we have removed three trees in the rear where the camellias are, as there was just too much shade. I also keep pruning the trees that are left. I then discovered that I had to relocate my plants; some require more sun and some require more shade, so I rotated them until I found the best spot for each.

You will find that every part of a garden has a different exposure and some yards will vary in soil types from front to back. I found in moving my camellias around that some of the lighter colored camellias like more shelter, such as "Tomorrow Park Hill," which likes

almost all shade. Some of the darker colors like more sun. I have my retics where they get the most sun and they are looking better all the time. I also found that my non-retics hybrids also like more sun. At the Huntington Gardens they have moved a "William Hertrich" from a shady spot into the sun and it gets all afternoon sun and it is now producing terrific flowers.

I would like to say a few words on virus. Some areas of our country like to virus camellias more than others. If you graft onto a large plant in the ground and it has virus, the plant is large enough and strong enough that it can overcome the virus. Have you ever noticed which are the failures of your grafts? If you will notice, most of the failures will be on the ones with virus. Julius Nuccio was saying the other day that there is a man back east that is doing a study on virus and he thinks that plants with virus are more susceptible to dieback. He finds more dieback on virused plants than on others free from virus.

It is thought that there are four strains of virus. One strain produced two different kinds of markings. One marking is little spots of white and the other will produce large areas of white. This could be in the same plant. If you want to keep a certain type of virus then you should take a scion from the branch that has the virus that you want, because from another part of the plant the virus may be different.

The nurserymen do not like virus because a customer will pick out a plant with a certain virus marking and the plant they buy may turn out to have a different marking. The virus markings are not consistent. Another thing I have noticed is that early in the season you will get more virus than you will get later in the season. A small plant grafted with virus may not show up the virus until the plant gets a little older and larger. In New Zealand they lose all the virus. Whether it is because of a lot of iron in the soil or because of the cool weather, I do not know.

A few words on gibbing. I'm not an expert on gibbing but I go to the Huntington Gardens once a week and help with the gibbing. We gib over there so that the blooms will come early for the public, not to get show flowers. We gib cluster buds, to make lots of color in the gardens. A few years back we made some tests (when Bill Goertz was active) on the different strengths of gib; the only difference we found in the strengths of gib is that the stronger solution brought the flowers to bloom a little earlier. In doing this we used different brands and we found that most of them work pretty well and about the same. In my own experience I couldn't say that one brand was any better than the other. In gibbing I think you should learn which plants gib the best. I have never had any luck gibbing Nuccio's Gem and there are others that do not respond. There is also a consideration of which buds to gib; which buds are advanced in growth enough to gib. In Bill Goertz' test he did find out that gib will travel a little ways in the plant, up and down the stem. Also that there is residual effect of gib; it tends to stay in the plant and maybe next year it will have a small effect. However, in that area we are not sure because of the weather conditions that change from year to year.

Show blooms: In starting out with camellias you should learn what a particular flower should look like in your area. You need to study the blooms and how they should perform. You can learn these things from nurseries and also places like the Huntington Gardens and flower shows. When judging in a show it is best to have your nomenclature book to refer to when there is a doubt. When you judge out of your area it is especially important to refer to the book. I find that there are fewer people that know about miniature and smalls than the larger flowers. I have some advantage because when I take all the pictures that I do, I get to look at the flowers and study them. After I

look at the pictures I sometimes wonder how a flower got up on the head table. There are times when I have seen 3 of a kind win and they didn't match in size or color. It really shows up in a picture.

Last but not least, I was asked to give my list of my 10 favorite camellias. I didn't pick my list because they are show blooms, I picked them because I enjoy the blooms on the bushes, in the garden, bringing them into the house and taking them to people. Bill Goertz will come by every now and again and get a box of flowers to take out to the place where he lives as the people all enjoy them so much.

This is my pleasure. When I worked I used to take flowers into work and let others enjoy them.

The following are my preferences; they are not show winners because the show winners are the judges' preferences: FASHIONATA, DIXIE KNIGHT SUPREME, MID-NIGHT, ELEGANS SUPREME, ELEGANS CHAMPAGNE, FREEDOM BELL, SWAN LAKE, PRIMA BALLERINA, HAROLD PAIGE, EMMA GAETA VAR., NUCCIO'S PEARL and AL GUNN.

The camellia hobby is ongoing. We are always learning, experimenting, enjoying their beauty and our friends.

CONTRIBUTORS TO THE CAMELLIA NOMENCLATURE FUND

Ernest Pieri and Anita Newcomb in memory of
Alice Neeley and Paul McClelland.
John Utvich.

Contributions to date to the Endowment Fund — \$14,750.

CONTRIBUTORS TO THE CAMELLIA REVIEW FUND

Dean and Marcie Alltizer in memory of Ruth Goertz.
Mr. and Mrs. Ralph Bernhardt in memory of Ruth Goertz.
Dorothy Davis in memory of Ruth Goertz.
Chuck and Rosamond Gerlach in memory of Ruth Goertz.
Grady and Helen Perigan in memory of Ruth Goertz.
Dean and Marcie Alltizer in memory of Alice Neeley.
Wayne and Leita Alltizer in memory of Alice Neeley.
Dorothy Davis in memory of Alice Neeley.
Warren and Rosario Dickson in memory of Alice Neeley.
Chuck and Rosamond Gerlach in memory of Alice Neeley.
Ab and Leone Summerson in memory of Alice Neeley.
I. John Movich
John Utvich.
The Camellia Information Fund.

Send contributions for Camellia Review Fund to:
Warren Dickson, 1935 Apex Avenue, Los Angeles, CA 90039

A DISCUSSION OF BLOOM SIZE VARIATION

By Bill Woodroof and Bill Donnan

In the early 1950's camellia blooms were entered into camellia shows by color. Gradually the show schedules have evolved until today we have divisions for *C. japonicas*, *C. reticulatas*, *C. non-reticulata* hybrids and species. Within these divisions we are gradually setting forth size classification and it is this factor which is open for discussion in this article. In discussing bloom size, emphasis is focused toward flowers grown outdoors without glass house protection and without special chemical treatment such as gibberellic acid. Furthermore, reference will be made from time to time to the book *CAMELLIA NOMENCLATURE* which sets forth the bloom size for each listed variety. This bloom size listing starts with the originator of the variety or is the result of many years of continuous observation, testing and research by many camellia growers in various locations.

The following quotation is taken from the 1984 *CAMELLIA NOMENCLATURE*: "The size of the flower is described as Miniature (2½ inches or less), Small (2½ to 3 inches), Medium (3 to 4 inches), Large (4 to 5 inches), and Very Large (over 5 inches). Size of flower will vary due to locality, soil type, culture and other factors. Where a new variety is on the fringe between size classifications, there is a tendency for many originators to classify a medium size flower as large on the premise that "big is beautiful" and due to a recent emphasis on miniature flowers, to down-size. However, the predominant reasons for the above would appear to be insufficient testing before listing and culture. When the true size of the newly registered bloom becomes apparent, a correction is made in the listed classification.

Normal variations in the size of blooms for a given variety will occur under the following circumstances:

(a) The locality of the growing has a significant influence on bloom size. Elevation above sea level, difference in soil type, quality of the water, variation in day and night temperature and weather conditions such as rainfall, humidity, etc. all influence the size of the flower.

(b) Culture has, perhaps, the most significant influence on bloom size. Pruning, disbudding, careful watering and periodic fertilizing tend to produce larger blooms.

The problem facing both exhibitors and judges in present day camellia flower shows is where to place and how to judge the blooms being exhibited. Most shows designate a section for benching Miniatures and another for Small japonicas. Then there will be another section for Medium, Large and Very Large japonicas. There will also be a section for *reticulata* hybrids and one section for non-*reticulata* hybrids. Several of the more enlightened shows have made an attempt to segregate the non-*reticulata* hybrids into a Large category and a Small category. This is a step in the right direction since it eliminates competition between, say, 'Elsie Jury' (a Large) and 'Freedom Bell' (a Small).

In many instances the *Camellia* Nomenclature, which is taken as a "guide book" in the classification of size, will list a variation in size for a given variety. For some varieties it will have a listing of "Miniature to Small" or "Medium to Large" or "Large to Very Large". The dilemma then presents itself, first as to where to place the bloom and next in which category to judge the bloom for an award. Most show schedules direct the exhibitor to place his or her bloom in alphabetical order in one of the above named sections. Then the judges are obliged to judge first the benched blooms for "Bench Awards" and then send outstanding blooms to the Head Table for

screening. It is at this point that confusion exists and perhaps some guide lines for both exhibitors and judges are warranted. These guide lines are set forth to protect the exhibitor, the viewing public and the retail nurseries.

(1) Exhibitors in entering blooms should use care to enter only "normal" size blooms in their proper size classification. If, for example, the flower is listed as Miniature to Small in the CAMELLIA NOMENCLATURE and the exhibitor has a 2 inch sized flower it should be placed in the Miniature section and not in the Small section. If, by some quirk of fate the bloom happens to be 4 inches in diameter the exhibitor should resist the temptation to bench the bloom. The "watch-word" is to place the bloom in its proper size classification related to size exhibited.

(2) Judges, judging at the bench level should carefully screen all entries for each variety. If, for example, a variety came to the show bench as Very Large when its listing in CAMELLIA NOMENCLATURE indicated the norm to be Medium size, the bloom would appear to be abnormal and it should not be judged. Judges should consult the size listing as recorded in the CAMELLIA NOMENCLATURE book and then, everything else being equal, make the award to the most normal size flower — not to the largest.

(3) When a bloom reaches the Head Table another screening process is forthcoming. Most Head Tables in California make Awards for Miniatures, Small, Medium and Large japonicas. If a flower is sent to the Head Table from an alphabetical section of Medium, Large and Very Large japonicas, it should be placed in the classification according to the size of a bloom being sent up. For example, if a Large "Alta Gavin" was sent up to the Head Table, it should be screened and judged along with all of the other Large sized blooms even though in the CAMELLIA NOMENCLATURE book it is listed as Medium to Large.

(4) Abnormality of size in any form, be it an abnormally Large or an abnormally Small bloom, has no place in a Camellia Flower Show. Exhibitors should resist the temptation to bench abnormal sized blooms and judges should ignore them if they are shown.

In closing it should be pointed out that as hybridizers become more and more proficient in developing new cultivars the time will come when there will be Miniature, Small, and Medium as well as the Large hybrid varieties. Looking ahead, it might be prudent for Camellia Show sponsors to consider the establishment of the same size classifications in the hybrid section as there are in the japonica sections.

PLACE YOUR ORDER NOW FOR

1985 CROP CAMELLIA SEEDS

Japonica Seeds — \$6.00 per 100 (minimum order)

Sasanqua Seeds — \$4.00 per 100 (minimum order)

Reticulata Seeds — 25¢ each

Southern California Camellia Society

P.O. Box 50525

Pasadena, CA 91105

Hey, Mom! We're Home!

by Howard E. Burnette

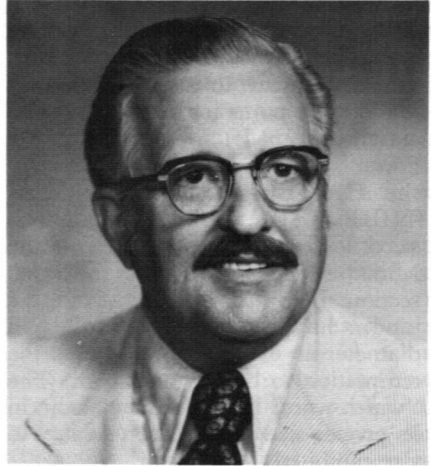
Castro Valley

Do you remember that camellia grower named Howard Burnette? How could I forget that unforgettable character? Didn't he move to Indiana? Yes, but that was 11 ½ years ago. One thing about Indiana, if it doesn't bounce like a basketball, forget it. For another thing, you don't raise camellias in sub-zero weather. In fact, no matter how mild or severe the weather, 5 or 6 rose bushes would be lost each year.

Well, folks, Bettye Jo and Howard have returned. They have settled in retirement in good old Castro Valley, to be near their two sons. I told Bettye Jo, "When we get resettled I'm not going to let the camellia activities take control as before." One must realize that "before" was during the time that I was still working. Now that I am fully retired, it should be a different ball game. Know what I did? A very good friend supplied 700 seeds (*Reticulata*, *Japonica* and *Sasanqua*) and, of course, they had to be planted. Another very good friend provided 20 named cultivars (some 6 ft. to 8 ft. tall) and another 20 root stocks for grafting. Since he supplied a bag of scions I just had to make 16 grafts. Not to mention those two grafts of *C. Chrysantha* that were made. There are yet those miniatures that must be grafted. In addition to all this, there are at least 10 or 12 cultivars that have been purchased.

Before the ink was dry on my Peninsula Camellia Society membership, I was asked to become a member of their board of directors and was asked to be co-chairman of judges for the 1986 show.

The past three months I have been laid up with a severe infection and resultant surgery on my right foot. With complete healing taking place, I can reflect on this fact . . . if it wasn't for this set-back, this camellia hobby might have taken control as before!



Howard Burnette

The next priority is to get the shade house and greenhouse needed to care for all these plants.

During my convalescence I was able to recap about 10 years' of past issues of the *Camellia Review* and several of my favorite books on camellias. For some reason this does nothing towards curing an itching green thumb. Once I was able to hobble around (under the watchful and critical eyes of Bettye Jo) I was able to do a little transplanting. What are friends for? Benefactors . . . to say the least.

It appears to be an early blooming season and we have been getting some nice blooms (without gib). Unless someone has been gibbing with a crop dusting plane! Ave Maria, Ballet Dancer and Grand Prix have been outstanding. Four Winds, Royalty, Vi Stone, Nuccio's Ruby, K. O. Hester and Dr. Clifford Parks are also showing off. One plant marked 'Big Leaf' is one of the rejected crosses of Frank Pursel's efforts . . . it has been blooming with a high crowned, 6" dia., 4" high flower which is a nice rose color. And here you critics thought Frank introduced everything which he

bloomed. Hold on to your hats, kiddies, because Frank has some very nice flowers to be released in the near future. Another seedling was marked 'seedling of Carl Tourje' and was salvaged from the grafting bench as the medium sized blooms are very long lasting, high crowned with straplike petals. These two rejects will become

very nice yard plants and are being added to our landscaping.

In conclusion, Bettye Jo and I are looking forward to meeting our many camellia friends and to enjoy with them the various camellia activities. In all candor, if we ever hope to compete, we will have to resurrect that "bull elephant manure" to get size on all our plants.

Camellias As A Living Memorial

by Margaret Macdonald-Ingram

On the campus of Portland University, overlooking the beautiful Willamette River, is a new grove of camellias. It is dedicated to the memory of my late husband, William Ingram. He was past president of the Oregon Camellia Society, a longtime member, and a camellia hobbyist.

While Portland, Oregon, has many fine public gardens, none is devoted to camellias. The International Rose Test Gardens are here. The magnificent Japanese Gardens, nearby. The Rhododendron Gardens at Crystal Springs, near Reed College, draws many people. Lilacs are featured at Duniway Park.

The nearest large collection of camellias in the northwest is at the Arboretum of the University of Washington, where 400 plants make a nice display. Since Portland's climate is even more favorable than Seattle's for camellias, we have every reason to believe that a large collection would attract many plant lovers and gardeners. It was time we had a place dedicated to camellias.

Portland University, where our camellia society holds its meetings, had shown an interest in having a camellia collection. They have a fairly good start at this, and their head horticulturist, Lowell Cordas, is a member of our society.

My husband had collected and

grown over a hundred and forty camellias in his garden here in Salem. Many were 35 years old. Some were trees, growing above the second story of his house. The house was to be sold after his death, and I promised him that I would find a home for his beloved camellias.

Many of the potted ones and smaller ones were given to interested members of our camellia society. Some camellias were located in spaces too difficult for removal. Others were just too large, and had to remain in his garden.

I contacted Portland University to see if they would like some of the large choice specimens. These had come through all kinds of weather, over the years, rain, cold, snow, etc., and were rugged and beautiful each season.

The University agreed. Seventeen of those fine old camellias were pruned back to about one-third their height, to accommodate for loss of roots. All were carefully dug by expert tree movers, and balled. This was done in late December, 1985. Some root balls weighed up to 500 pounds. They had to be transported over 50 miles by truck.

At Portland University, preparations were made ahead of time to receive the camellias. Proper holes were dug. Because we had had the coldest fall season in the history of the weather bureau, and the ground was frozen near the surface, leaves were poured

into the holes to keep the frost out until the exact time of arrival of the plants. Then the leaves were taken out, the plants dug in with ground bark, compost and good soil. Chelated solution was watered in, and the camellias had a good new home.

It will probably take two or more years for these camellias to attain the growth and vigor they had in Wil-

liam's garden. I feel sure they will all survive and flourish, with all the tender loving care they have received. Our members will check up on the camellias when we gather for our meetings, and I may add other camellias to the grove in the years to come.

I think my husband would approve his living memorial.



LETTER TO THE EDITOR

I was particularly fond of the last issue of *Camellia Review*. I find it very worthwhile. I plan on using Bill Donnan's article "Sex in the Single Species." I also plan to use the article "Questions and Answers Program" by Marilee Gray and Sergio Bracci. I will, of course, footnote each that they are from your January-February, 1986 issue.

Ann and I send our best regards to all our good camellia friends in Southern California and we may possibly be able to come to the picnic if we know when it is going to be and we can work it into our fairly busy schedule.

Sincerely yours,
Milton H. Brown
Executive Director
American Camellia Society

CORRECTION: Article on International Camellia Society Congress in Australia 9/86, *The Camellia Review*, Nov./Dec. 1985, bottom of page 5, add: "The correct cost of PCT/2, based on current Syd-Adel airfare, is AUST \$465 for twin-share occupancy per person; AUST \$610 for single room occupancy, based on a minimum group of 31."

Please Listen to Me!

When I ask you to **listen** to me and you start giving me advice, you have not done what I asked.

When I ask you to **listen** to me and you begin to tell me why I shouldn't feel that way, you are trampling on my feelings.

When I ask you to **listen** to me and you feel you have to do something to solve my problem, you have failed me, strange as that may seem.

Listen! All I ask is that you **listen**, not talk or do — just hear me.

Advice is cheap; 20 cents will get you both Dear Abby and Billy Graham in the same paper.

I can do for myself; I'm not helpless — maybe discouraged and faltering, but not helpless.

When you do something for me that I can and need to do for myself, you contribute to my fear and inadequacy.

But when you accept as a simple fact that I do feel what I feel, no matter how irrational, then I can quit trying to convince you and can get about this business of understanding what's behind this irrational feeling. When that's clear, the answers are obvious and I don't need advice.

Irrational feelings make sense when we understand what's behind them.

So please **listen** and just hear me.

And if you want to talk, wait a minute for your turn — and I'll **listen** to you.

— Author Anonymous

The Pomona Valley Performers

by Marilee Gray

Hardly has the annual bustle of the camellia shows subsided when members of the Pomona Valley Camellia Society swing into their off-season activity of preparing garden displays. Members loan valuable specimen plants and garden props and contribute long hours of labor toward prop construction or actual display preparation for a good cause. Awards or contractual income from these efforts have become the major source of revenue for the society. In addition, each display is designed to present both beauty and something of educational value to the public.

What began many years ago as a low or no cost display of borrowed shade plants at the Los Angeles County Fair in Pomona has evolved into something a lot more costly, diverse, and complex. Planning for the 1985 fair, for example, began more than a year in advance. A large, operational waterwheel and a low, arching Oriental bridge were designed and built in the months ahead. The bridge was used in a Japanese teahouse garden along with other props accumulated from previous displays — Oriental lanterns, a garden basin filled with water recirculated through a bamboo spill, and over 1000 pounds of black pebbles. The waterwheel with a waterlily pond became the focal point of an Early American garden. Two used-brick patios appointed with ornate, white wrought iron furniture and lighted with hanging carriage lanterns were additional coordinated props.

Most of the plants used in the two displays were from a collection of specimen plants the society has accumulated in recent years. These plants, most in 15 gallon tubs or larger, are carefully housed and tended in members' gardens between shows. While a few plants, such as *Rhapis* palms, were specimen size and quality when purchased, most plants, including several



Marilee Gray

varieties of dwarf Japanese maples, were affordable only when comparatively small and have been grown into specimen size over the years.

Actual site preparation began in early August, some six weeks before opening day. The tempo and intensity of work steadily increased right up to judging day. By then, ponds had been dug, patios had been laid, "feather rock" boulders had been nudged into place, plants had been hung or "planted," props had been positioned, electrical cords had been strung or buried, circulating pumps had been tested, sod had been laid, site plans had been drawn, labeled, and posted, and every plant — from eight to ten-foot palms and false aralias to four-inch pots of mondo grass — had been meticulously groomed.

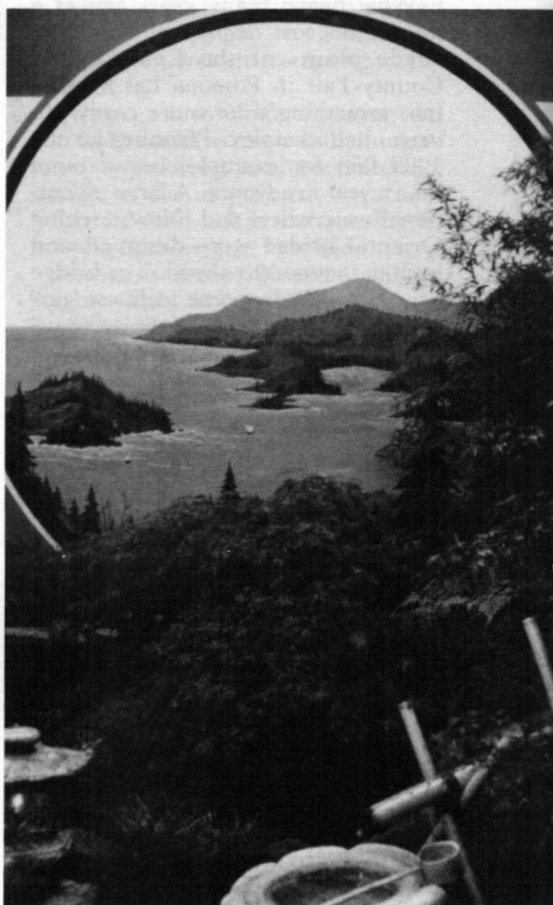
When the judging was completed, the displays had each earned a first place in their respective categories. In addition, the Early American garden earned a plaque and a bonus award for the best display by a group — company, club, or organization. This display also earned the distinction of receiving the only perfect score from any judge at the show and of receiving

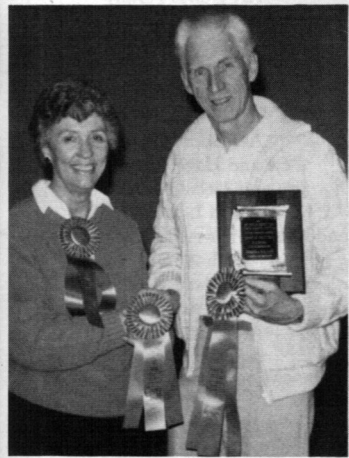
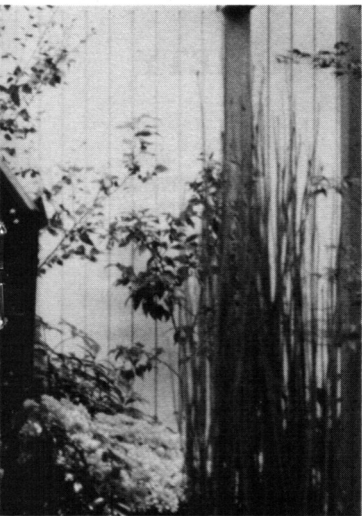
the highest point total of all displays from the judging panels.

From the society's participation at the Los Angeles County Fairs have come invitations to display at the Great Western Junior Livestock Show in Pomona and at the National Orange Shows in San Bernardino. On two different occasions, the society also undertook a mall spring show. Diversity was emphasized as the various sites throughout the mall depicted Oriental gardens, English country gardens, a woodland scene, a tropical scene, gazebo gardens, a begonia garden, a hanging garden, and a camellia garden.

Depending upon the scope of the individual show, expenditures may vary from a few hundred to a few thousand dollars. Purchases may be limited to a few select plants to complement the society's existing collection or may be several hundred florists' color plants, ferns, and exotic foliage plants. When possible, blooming azaleas and rhododendrons have been used exclusively for dramatic color. Although the scheduling of most shows does not enable the use of blooming camellias, most displays do contain at least one token camellia in good foliage.

What is essential for such ambitious display work is a super cooperative group that manages to adapt to the specific show requirements, planning, and scheduling. If there can be any compensation great enough to warrant such an intensive effort, it is found in the exhilarating satisfaction of accomplishment and in the enthusiasm of public response. Indeed, this society does perform to live and live to perform — even if it is off-season and off-Broadway.





SHOW RESULTS

CENTRAL CALIFORNIA CAMELLIA SOCIETY

March 8th & 9th, 1986

<i>Trophy</i>	<i>Variety</i>	<i>Winner</i>
Award of Excellence		Art Gonos Family
Best of Show	<i>Miss Tulare</i>	Art Gonos Family
Best Large/Very Large Japonica	<i>Ruffian</i>	Mr. and Mrs. Elmer Achterberg
Runner-up	<i>Grand Prix</i>	Art Gonos Family
Best Medium Japonica	<i>Jean Clere</i>	Jim and Jackie Randall
Runner-up	<i>Feathery Touch</i>	Jim and Jackie Randall
Best Small Japonica	<i>Wilamina</i>	Mr. and Mrs. Paul Dean
Runner-up	<i>Little Babe Var.</i>	Mr. and Mrs. Elmer Achterberg
Best Miniature Japonica	<i>Grace Albritton Starfire</i>	Mr. and Mrs. Elmer Achterberg
Runner-up	<i>Ellen Daniel</i>	Frank and Winnie Serpa
Best Retic	<i>Terrell Weaver</i>	Art Gonos Family
Runner-up	<i>Curtain Call</i>	Thomas Lee
Best Hybrid	<i>Kramer's Fluted Coral</i>	Marvin Belcher
Runner-up	<i>Elsie Jury</i>	Jack and Anne Woo
Best 3 Large/Very Large Japonicas	<i>Tomorrow Park Hill</i>	Art Gonos Family
Runner-up	<i>Carter's Sunburst Pink</i>	Art Gonos Family
Best 3 Medium Japonicas	<i>Spring Sonnet</i>	Jack and Anne Woo
Runner-up	<i>In The Pink</i>	Art Gonos Family
Best 3 Small Japonicas	<i>Black Tie Var.</i>	Mr. and Mrs. Anthony Pinheiro
Runner-up	<i>Hishi Karaito</i>	Art Gonos Family
Best 3 Miniature Japonicas	<i>Little Slam</i>	Art Gonos Family
Runner-up	<i>Man Size</i>	Pete and Hazel Grosso
Best 3 Retics	<i>Lasca Beauty</i>	Jim and Jackie Randall
Runner-up	<i>Dr. Clifford Parks</i>	Al and Lois Taylor
Best 3 Hybrids	<i>Pink Dahlia</i>	Mr. and Mrs. Elmer Achterberg
Runner-up	<i>E. G. Waterhouse</i>	Ruth Ann Lewis
Best 5 Large Japonicas	<i>Tomorrow Park Hill</i>	Art Gonos Family
Best 5 Medium Japonicas	<i>Milinda</i>	Maurice and Jocelyn Vervalles
Best Boutonnieres	<i>Tinsie</i>	Art Gonos Family
Best 3 Different Blooms	<i>Man Size</i>	Art Gonos Family
	<i>Dixie Knight Supreme</i>	
	<i>Grand Prix</i>	Jack and Anne Woo
Best 9 Different Blooms		
Best "Miss Tulare or Miss Tulare Var."		
Maurie Abramson Memorial Award	<i>Miss Tulare</i>	Art Gonos Family
Runner-up	<i>Miss Tulare Var.</i>	Art Gonos Family
Best White Camellia	<i>Swan Lake</i>	Jack and Anne Woo
Best Fragrant	<i>Scentuous</i>	Gary Schanz
Best Higo	<i>Tenju</i>	Art Gonos Family
Best Yellow	<i>Botan Yuki</i>	Art Gonos Family
Best C.C.C.S. Novice Member	<i>Hishi Karaito</i>	Kay Knight
Best Non-Member	<i>Margaret Davis</i>	Tammy Munger
Best Seedling	<i>Pink & White Small</i>	Kramer's Bros. Nurseries
Ken Thompson Memorial Award		
Junior Division Awards		
Best Japonica	<i>Elegans Supreme</i>	Demitri Gonos
Best Other Than Japonica	<i>Buddha</i>	Julie Knight
Best Boutonniere	<i>Little Slam</i>	Demitri Gonos
Best Arrangement of Show		Ruth Ann Lewis

SHOW RESULTS

DELTA CAMELLIA SOCIETY

February 15 & 16, 1986

<i>Trophy</i>	<i>Variety</i>	<i>Winner</i>
Sweepstakes	(49 Blue Ribbons)	Mr. and Mrs. Jack Woo
Runner-up	(48 Blue Ribbons)	Mr. and Mrs. Don Bergamini
Best of Show	<i>Pharaoh</i>	Mr. and Mrs. James Randall
Best White	<i>Charlie Bettes</i>	Mr. and Mrs. Don Lesmeister
Best Non Retic Hybrid Seedling		Mr. and Mrs. James Toland
Runner-up		Hote Hall
Best Nine Blooms		Mrs. William Breuner
Best Four Blooms		Jack and Ann Woo
Best Miniature	<i>Little Man Formal</i>	Mr. and Mrs. Anthony Pinheiro
Runner-up	<i>Little Bo-Peep</i>	R. Pozdol
Best Small	<i>Grace Albritton</i>	Mr. and Mrs. E. F. Achterberg
Runner-up	<i>Tom Thumb</i>	Darren Smith
Best Medium Japonica	<i>Miss Charleston Var.</i>	Jack and Ann Woo
Runner-up	<i>Alta Gavin</i>	Mr. and Mrs. Don Lesmeister
Best Large Japonica	<i>Charlie Bettes</i>	Mr. and Mrs. Don Lesmeister
Runner-up	<i>Annette Gehry</i>	Mr. and Mrs. E. F. Achterberg
Best Very Large Japonica	<i>Elegans Champagne</i>	Thomas Lee
Runner-up	<i>Moonlight Bay</i>	Mr. and Mrs. Don Lesmeister
Best Retic Hybrid under 5 1/2 "	<i>Valley Knudsen</i>	Mr. and Mrs. J. Scott
Runner-up	<i>Black Lace</i>	Jack and Ann Wood
Best Retic Hybrid over 5 1/2 "	<i>Pharaoh</i>	Mr. and Mrs. James Randall
Runner-up	<i>Jean Purcell</i>	Wilbur and Mary Anne Ray
Best Non-Retic Hybrid	<i>Pink Dahlia</i>	Mr. and Mrs. Don Lesmeister
Runner-up	<i>Rose Parade</i>	Mr. and Mrs. E. F. Achterberg
Best Three Miniature	<i>Pink Perfection</i>	Mr. and Mrs. Pete Grosso
Runner-up	<i>Baby Pearl</i>	Mr. and Mrs. Don Bergamini
Best Three Smalls	<i>Demi-Tasse</i>	Mr. and Mrs. E. F. Achterberg
Runner-up	<i>Tiny Bell</i>	Mr. and Mrs. Don Bergamini
Best Three Medium Japonicas	<i>Anita</i>	Larry and Nancy Pitts
Runner-up	<i>Lady Kay</i>	Jack Lewis
Best Three Large Japonicas	<i>Tiffany</i>	Mrs. Edith Mazzei
Runner-up	<i>Carter's Sunburst</i>	The Harlan Smith Family
Best Three Very Large Japonicas	<i>Easter Morn</i>	Mrs. William R. Breuner
Runner-up	<i>Tomorrow Park Hill</i>	Mrs. William R. Breuner
Best Three Retic Hybrids	<i>Hulyn Smith</i>	Mrs. Edith Mazzei
Runner-up	<i>Valley Knudsen</i>	Larry and Nancy Pitts
Best Three Non-Retic Hybrids	<i>Water Lily</i>	H. W. Oliver
Runner-up	<i>Coral Delight Var.</i>	Frank and Winnie Serpa
Best Five Miniatures	<i>Man Size</i>	Mr. and Mrs. Don Bergamini
Runner-up	<i>Freedom Bell</i>	Mr. and Mrs. James Toland
Best Five Japonicas	<i>Ragland Supreme</i>	The Harlan Smith Family
Runner-up	<i>Grand Prix</i>	Larry and Nancy Pitts
Best Youth Japonica under 4 1/2 "	<i>Little Michael</i>	Michael Mazzei
Runner-up	<i>Tiny Princess</i>	Joellen Bergamini
Best Youth Japonica over 4 1/2 "	<i>Chameleon</i>	Michael Mazzei
Runner-up	<i>Elegans Supreme</i>	Joellen Bergamini
Best Youth Retic Hybrid	<i>Samantha</i>	Michael Mazzei
Runner-up	<i>Overture</i>	Michael Mazzei
Best Youth Non-Retic Hybrid	<i>Water Lily</i>	Joellen Bergamini
Runner-up	<i>Sylvia May Wells</i>	Audrey Schumer

SHOW RESULTS

HUNTINGTON SHOW — SAN MARINO

<i>Trophy</i>	<i>Variety</i>	<i>Winner</i>
Best Treated Large Japonica	<i>Carter's Sunburst</i>	D. T. Gray Family
Runner-up	<i>Tomorrow Park Hill</i>	Mr. and Mrs. Caryll W. Pitkin
Best Treated Medium Japonica	<i>Cherries Jubilee</i>	Sergio and Elsie Bracci
Runner-up	<i>Nuccio's Jewel</i>	Mr. and Mrs. R. Jaacks
Best Treated Boutonniere Japonica	<i>Maroon and Gold</i>	Mr. and Mrs. Sergio Bracci
Runner-up	<i>Splash-o-White</i>	Dean and Marcie Alltizer
Best Treated Reticulata Hybrid	<i>Valentine Day Var.</i>	Sergio and Elsie Bracci
Runner-up	<i>Harold Paige</i>	Sergio and Elsie Bracci
Best Treated Non-Reticulata Hybrid	<i>Elsie Jury</i>	Sergio and Elsie Bracci
Runner-up	<i>Angel Wings</i>	Sergio and Elsie Bracci
Best Non-Treated Large Japonica	<i>Chows Hon Ling</i>	Dr. Lee Chow
Runner-up	<i>Elegans Supreme</i>	Mel Belcher
Best Non-Treated Medium Japonica	<i>Wildfire</i>	Mr. and Mrs. M. L. Schmidt
Runner-up	<i>Eleanor Martin Supreme</i>	Mr. and Mrs. Caryll Pitkin
Best Non-Treated Boutonniere Japonica	<i>Demi Tasse</i>	Mel Belcher
Runner-up	<i>Splash-o-White</i>	Mr. and Mrs. R. Jaacks
Best Non-Treated Reticulata Hybrid	<i>Emma Gaeta</i>	Grady and Helen Perigan
Runner-up	<i>Dr. Clifford Parks</i>	Herman Belcher
Best Non-Treated Non-Reticulata Hybrid	<i>Waltz Time</i>	Herman Belcher
Runner-up	<i>Coral Delight</i>	Mr. and Mrs. B. M. Pace
Best Species Bloom	<i>Shibori Egao</i>	Rudy Moore
Runner-up	<i>Yuki-Komachi</i>	Chuck Gerlach
Best Formal Double	<i>Chie Tarumoto</i>	Bill Donnan

Court of Honor

Adolph Audusson Special
Miss Charleston Var.
Mark Allen Var.
Nuccio's Cameo
Waltz Time Var.
Grand Prix
Little Michael
Betty Foy Sanders
Nuccio's Pearl
Fashionata
Dr. Clifford Parks
Cornelian
Grand Prix Var.
Miss Tulare Var.
Desire
Midnight
Erica McMinn
Feathery Touch

Mr. and Mrs. R. T. Jaacks
 Mr. and Mrs. Sergio Bracci
 Rudy Moore
 Lee Chow
 Mr. and Mrs. Sergio Bracci
 Mr. and Mrs. Sergio Bracci
 Mr. and Mrs. Grady Perigan
 Mr. and Mrs. M. L. Schmidt
 Mr. and Mrs. Sergio Bracci
 Mel Belcher
 Mr. and Mrs. Sergio Bracci
 Mr. and Mrs. Sergio Bracci
 Mr. and Mrs. Sergio Bracci
 Mr. and Mrs. Sergio Bracci
 Mel Belcher
 Mr. and Mrs. Sergio Bracci
 Mr. and Mrs. Sergio Bracci
 Mr. and Mrs. Sergio Bracci
 Mel Belcher
 Mr. and Mrs. Sergio Bracci
 Mr. and Mrs. Sergio Bracci
 Mr. and Mrs. R. Jaacks



Grady Perigan,
Huntington Show
Chairman

SHOW RESULTS

KERN CAMELLIA SOCIETY

BAKERSFIELD, CALIFORNIA

March 1 and 2, 1986

Trophy

Best Large Japonica
 Runner-up
 Best Medium Japonica
 Runner-up
 Best Small Japonica
 Runner-up
 Best Three Large Japonicas
 Runner-up
 Best Three Medium Japonicas
 Runner-up
 Best Three Small Japonicas
 Runner-up
 Best Single Reticulata Hybrid
 Runner-up
 Best Tray of 3 Reticulata Hybrids
 Runner-up
 Best Non-Reticulata Blossom
 Runner-up
 Best Tray of 3 Non-Reticulata Hybrids
 Runner-up
 Best Chemically Treated
 Best Seedling
 Best Species
 Collector's Tray

Variety

Swan Lake
Easter Morn
Eleanor Martin Supreme
Eleanor Martin
Grace Albritton
Alison Leigh Woodroof
Grand Slam
Grand Prix
Dr. John D. Bell
China Doll
Hishi Karaito
Man Size
Nuccio's Ruby
Emma Gaeta
Valley Knudsen
Royalty
Elsie Jury
South Seas
Pink Dahlia
Fluted Coral
Lady Laura

Koto Hajime

Winner

Lee Chow
 Mr. and Mrs. Jack Woo
 Al and Francis Gamper
 Lee Chow
 Wilbur and Mary Anne Ray
 Lee Chow
 Beverly and Fred Dukes
 Mr. and Mrs. Jack Woo
 Mr. and Mrs. Jack Woo
 Lee Chow
 Marvin Belcher
 Mr. and Mrs. Jack Woo
 Dr. and Mrs. Richard Stiern
 Sergio and Elsie Bracci
 Mr. and Mrs. Jack Woo
 Al and Leone Summeson
 Al and Frances Gamper
 Marvin Belcher
 Wilbur and Mary Anne Ray
 Sergio and Elsie Bracci
 Lee Chow
 Mr. and Mrs. Jack Woo
 Sergio and Elsie Bracci
 Wilbur and Mary Anne Ray

Single Blossom

In the Pink
Tammia
Hilda Jamieson
Feathery Touch
Lemon Drop
Miss Charleston Var.
Harold Paige
Miss Tulare

Tray of Three

South Seas
Pink Perfection
Elizabeth Doud
Miss Tulare
Eleanor Martin Supreme
Black Lace
Ivory Tower
Covina
Coral Delight
Prima Ballerina
 Best Arrangement
 Best Teen Age Arrangement
 Best Children's Arrangement

Court of Honor

Melvin Belcher
 Mr. and Mrs. Jack Woo
 Lee Chow
 Mr. and Mrs. R. T. Jaacks
 Wilbur and Mary Anne Ray
 Marvin Belcher
 Dr. and Mrs. Richard Stiern
 Dr. and Mrs. Richard Stiern

Marvin Belcher
 Beverly and Fred Dukes
 Mr. and Mrs. Melvin Canfield
 Tanya Newby
 Marvin Belcher
 Wilbur and Mary Anne Ray
 Marvin Belcher
 Jim and Mary Dahlberg
 Marvin Belcher
 Lee Chow
 Dr. Lee Chow
 Lisa Wycoff
 Hilary Meek



Dick Stiern
Kern
Show Chairman

SHOW RESULTS POMONA

<i>Trophy</i>	<i>Variety</i>	<i>Winner</i>
Best Large and Very Large Japonicas	<i>Katie Var.</i>	Al and Frances Gomper
1st Runner-up	<i>Adolphe Audusson Special</i>	John and Sonia Movich
2nd Runner-up	<i>Carter's Sunburst</i>	Art Gonos Family
Best Medium Japonicas	<i>Silver Chalice</i>	Art Gonos Family
1st Runner-up	<i>Nuccio's Gem</i>	Dr. and Mrs. Fred Mowray
2nd Runner-up	<i>Midnight Var.</i>	Marvin Belcher
Best Small Japonica or Hybrid	<i>Coral Delight</i>	Mr. and Mrs. B. M. Pace
Runner-up	<i>Magnoliaflora</i>	Dr. and Mrs. L. E. Chow
Best Miniature Japonica or Hybrid	<i>Tammia</i>	Art Gonos Family
Runner-up	<i>Fircone Var.</i>	Dr. L. E. Chow
Best Miniature or Small Japonica or Hybrid		
Tray of Three	<i>Grace Albritton</i>	Mr. and Mrs. M. L. Schmidt
Runner-up	<i>Hishi Karaito</i>	Mel Belcher
Best Large or Very Large Japonicas		
Tray of Three	<i>Prima Ballerina</i>	D. T. Gray Family
Runner-up	<i>Swan Lake</i>	Dr. and Mrs. L. E. Chow
Best Medium Japonica		
Tray of Three	<i>Magnoliaflora</i>	Dr. L. E. Chow
Runner-up	<i>Dixie Knight Var.</i>	Al and Frances Gomper
Best Large or Very Large Japonicas		
Tray of Five	<i>Elegans Supreme</i>	Sergio and Elsie Bracci
Runner-up	<i>Grand Prix</i>	Sergio and Elsie Bracci
Best Medium Japonicas		
Tray of Five	<i>Sawada's Dream</i>	Dr. and Mrs. R. L. Stiern
Runner-up	<i>Magnoliaflora</i>	Art Gonos Family
Best Bloom of Australian Origin	<i>E. G. Waterhouse</i>	Mr. and Mrs. M. L. Schmidt
Best Yellow Bloom	<i>Olympic Gold</i>	Lee and Emma Gaeta
Best Scented Bloom	<i>Lutchuensis</i>	Ronald Baird
Very Large Hybrid or Reticulata	<i>Emma Gaeta Var.</i>	Lee and Emma Gaeta
1st Runner-up	<i>Nuccio's Ruby</i>	Mr. and Mrs. B. M. Pace
2nd Runner-up	<i>Miss Tulare</i>	Dr. and Mrs. R. A. Stiern
Best Large Hybrid or Reticulata	<i>Cornelian</i>	Sergio and Elsie Bracci
Runner-up	<i>K. O. Hester</i>	Wayne and Leita Alltizer
Best Medium Hybrid or Reticulata	<i>South Seas</i>	Lee and Emma Gaeta
Runner-up	<i>Pink Dahlia</i>	Herman Belcher
Best Very Large Hybrid or Reticulata		
Tray of Three	<i>Emma Gaeta Var.</i>	Lee and Emma Gaeta
Runner-up	<i>Arcadia</i>	D. T. Gray Family
Best Large Hybrid or Reticulata		
Tray of Three	<i>Valley Knudsen</i>	Mr. and Mrs. W. F. Harmsen
Runner-up	<i>Anticipation</i>	Mel Belcher
Best Medium Hybrid or Reticulata		
Tray of Three	<i>Angel Wings</i>	D. T. Gray Family
Runner-up	<i>E. G. Waterhouse</i>	Mr. and Mrs. M. L. Schmidt
Best Very Large Hybrid or Reticulata		
Tray of Five	<i>Dr. Clifford Parks</i>	Sergio and Elsie Bracci
Runner-up	<i>Francie L.</i>	Sergio and Elsie Bracci
Best Large Hybrid or Reticulata		
Tray of Five	<i>Nuccio's Ruby</i>	Herman Belcher
Runner-up	<i>Valley Knudsen</i>	D. T. Gray Family
Best Medium Hybrid or Reticulata		
Tray of Five	<i>Waltz Time Var.</i>	Mr. and Mrs. Richard L. Stiern
Runner-up	<i>Dr. Louis Pollitzi</i>	Dr. and Mrs. Fred Mowrey
Best Species	<i>Botan-Yuki</i>	Art Gonos Family

Runner-up
 Best Treated Japonica
 Runner-up
 Best Treated Hybrid or Reticulata
 Runner-up
 Best Seedling
 Best Sport or Mutant
 Best Commercial Display
 Best Commercial Bloom
 Best Novice Bloom
 Harlan Covey Award
 Award of Merit — Novice
 Award of Merit — Novice
 Award of Merit — Novice
 Award of Merit — Novice
 Best Intermediate Bloom
 Award of Merit — Intermediate
 Award of Merit — Intermediate

Sheboro-Egao
Elegans Champagne
Elegans Supreme
Coral Delight Var.
Curtain Call
Seedling of Saluenensis
Sport of Carter's Sunburst
Tid Bit
Carter's Sunburst

Milo Rowell
Pink Sparkle
Grand Prix
Elegans Splendor
Zorina
Grand Prix
Adolphe Audusson Special
Nuccio's Ruby

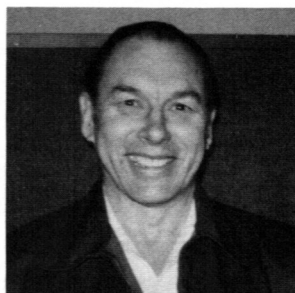
Marvin Belcher
 Art Gonos Family
 Art Gonos Family
 Art Gonos Family
 Sergio and Elsie Bracci
 Ben Mackall
 Ben Mackall
 Kramer's Nursery
 Nuccio's Nurseries

 E. J. Mueller
 E. J. Mueller
 E. J. Mueller
 Lynn Attrill Andrews
 Florence Christiansen
 Barbara Wheeler
 Euvon Biesel
 Matt Wilkin

Miss Charleston
Han-Ling Snow
Wildfire
Glen 40 Var.
Anita
Kramer's Fluted Coral
Little Slam
Pink Perfection
Elegans Champagne
Glen 40
Elegans Splendor
Dixie Knight
Howard Asper
Wandin Sebire
Al Gunn
Valley Knudsen
Dr. Louis Pollitzi
South Seas
Nuccio's Ruby
Pink Sparkle
Kramer's Supreme
Lasca Beauty
Tiffany

Court of Honor

Mr. and Mrs. G. Perigan
 Mr. and Mrs. B. M. Pace
 Art Gonos Family
 Dr. and Mrs. L. E. Chow
 Mr. and Mrs. B. M. Pace
 Marvin Belcher
 Mr. and Mrs. W. T. Harmsen
 Mr. and Mrs. Wayne Altizer
 Mr. and Mrs. Pat Novack
 Norma Mary
 Sergio and Elsie Bracci
 Grady and Helen Perigan
 Jerry Biewend
 Mr. and Mrs. M. L. Schmidt
 Sergio and Elsie Bracci
 Mr. and Mrs. Ab Summerson
 Mr. and Mrs. C. S. Bliss
 Sergio and Elsie Bracci
 Mr. and Mrs. M. L. Schmidt
 E. J. Mueller
 Art Gonos Family
 Art Gonos Family
 Val Brenneis



Jim Wilkin
Pomona Show Chairman

SHOW RESULTS

SOUTH COAST CAMELLIA SOCIETY

Jan. 25th - 26th, 1986

<i>Trophy</i>	<i>Variety</i>	<i>Winner</i>
Best Treated Large Japonica	<i>Tomorrow's Dawn</i>	Jack & Anne Woo
Runner-up	<i>Easter Morn</i>	Jack and Anne Woo
Best Treated Medium Japonica	<i>Cherries Jubilee</i>	Sergio and Elsie Bracci
Runner-up	<i>Sawada's Dream</i>	Jack and Anne Woo
Best Treated Reticulata	<i>Pharaoh</i>	Sergio and Elsie Bracci
Runner-up	<i>Harold Page</i>	Dean and Marcie Alltizer
Best Treated Hybrid	<i>Elsie Jury</i>	Sergio and Elsie Bracci
Runner-up	<i>Anticipation</i>	Bob and Alice Jaacks
Best Three Treated Japonicas	<i>Kramer's Supreme</i>	John and Sonia Movich
Best Three Treated Reticulatas	<i>Nuccio's Ruby</i>	Bob and Alice Jaacks
Best Non-Treated Large Japonica	<i>Moonlight Sonata</i>	Dr. Lee Chow
Runner-up	<i>Clark Hubbs</i>	Herman Belcher
Best Non-Treated Medium Japonica	<i>Magnoliaflora</i>	Dr. Lee Chow
Runner-up	<i>Midnight</i>	Sergio and Elsie Bracci
Best Non-Treated Miniature	<i>Pearl's Pet</i>	Herman Belcher
Runner-up	<i>Bob's Tinsie</i>	Grady and Helen Perigan
Best Non-Treated Small	<i>Allison Leigh Woodroof</i>	Dr. Lee Chow
Runner-up	<i>Baby Pearl</i>	Sergio and Elsie Bracci
Best Non-Treated So. Coast		
Society Japonica	<i>Nuccio's Jewel</i>	Tom Hughes
Runner-up	<i>Kramer's Supreme</i>	Dr. and Mrs. T. D. Christensen
Best Non-Treated So. Coast		
Soc. Reticulata	<i>Dr. Clifford Parks</i>	Dr. and Mrs. T. D. Christensen
Runner-up	<i>K. O. Hester</i>	Harry and Jane Putnam
Best Non-Treated Reticulata	<i>Curtain Call</i>	Bob and Alice Jaacks
Runner-up	<i>Emma Gaeta Var.</i>	Mr. and Mrs. C. W. Pitkin
Best Non-Treated Hybrid	<i>Waltz Time Var.</i>	Dr. and Mrs. Richard Stiern
Runner-up	<i>Angel Wings</i>	Mel Belcher
Best Non-Treated Specie	<i>Egao</i>	Mel Belcher
Runner-up	<i>Botan-Yuki</i>	Herman Belcher
Best Three Non-Treated Japonicas	<i>Tomorrow Park Hill</i>	Sergio and Elsie Bracci
Best Three Reticulata and Hybrids	<i>Waltz Time</i>	Marvin Belcher
Best Three Miniature and Small	<i>Little Michael</i>	D. T. Gray Family
Best Non-Treated Seedling Japonica		Mr. and Mrs. W. F. Harmsen
Best Non-Treated Seedling Reticulata		Lee Gaeta

Court of Honor

<i>Treated</i>		
<i>Cornelian</i>	Sergio and Elsie Bracci	
<i>Miss Tulare</i>	Dean and Marcie Alltizer	
<i>Gee Homeyer</i>	Jack and Anne Woo	
<i>Marie Mackall</i>	Jack and Anne Woo	
<i>Grand Slam</i>	Sergio and Elsie Bracci	
<i>Curtain Call</i>	Sergio and Elsie Bracci	
<i>Betty's Dawn</i>	Jack and Anne Woo	
<i>Mark Alan</i>	Jack and Anne Woo	
<i>Non-Treated</i>		
<i>Wild Fire</i>	Dean and Marcie Alltizer	
<i>Grand Prix</i>	Sergio and Elsie Bracci	
<i>Keupie Doll</i>	Sergio and Elsie Bracci	
<i>Sawada's Dream</i>	Dr. and Mrs. Richard Stiern	
<i>Freedom Bell</i>	Marvin Belcher	
<i>Chandler Elegans</i>	Herman Belcher	
<i>Iwane</i>	Mr. and Mrs. Mel Canfield	

Prima Ballerina
Wild Fire
Eleanor Martin Supreme
Silver Cloud
Bill Johnston
Terrell Weaver
Donnan's Dream
Winner's Circle



Glen Burroughs
South Coast
Show Chairman

D. T. Gray Family
 Mr. and Mrs. M. L. Schmidt
 Lee Chow
 Mr. Erwin L. Verity
 Dr. Lee Chow
 Al Gamper
 Sergio and Elsie Bracci
 Marvin Belcher

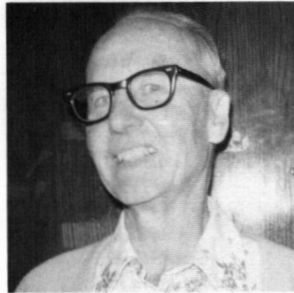
SHOW RESULTS SAN DIEGO CAMELLIA SHOW 1986

<i>Trophy</i>	<i>Variety</i>	<i>Winner</i>
Best Large Japonica	<i>Tomorrow Park Hill</i>	Mr. and Mrs. R. L. Jaacks
Runner-up	<i>Miss Charleston</i>	Mr. and Mrs. M. L. Schmidt
Best Medium Japonica	<i>Cherry Jubilee</i>	Mel Belcher
Runner-up	<i>Wildfire</i>	Sergio and Elsie Bracci
Best Small Japonica	<i>Baby Pearl</i>	Sergio and Elsie Bracci
Runner-up	<i>Splash-o-White</i>	Sergio and Elsie Bracci
Best Miniature Japonica	<i>Man Size</i>	Mel Belcher
Runner-up	<i>Grace Albritton</i>	Sergio and Elsie Bracci
Best Retic and Retic Hybrid	<i>Dr. Clifford Parks</i>	Sergio and Elsie Bracci
Runner-up	<i>Francie L.</i>	Mr. and Mrs. B. M. Pace
Best Hybrid	<i>Waltz Time</i>	Herman Belcher
Runner-up	<i>Kramer's Fluted Coral</i>	Mr. and Mrs. B. M. Pace
Best Large Japonica		
Tray of Three	<i>Julia France</i>	Dr. and Mrs. Richard Stiern
Runner-up	<i>Elegans Splendor</i>	Sergio and Elsie Bracci
Best Medium, Small, Miniature	<i>Dixie Knight Supreme</i>	Mel Belcher
Runner-up	<i>Sawada's Dream</i>	Dr. and Mrs. Richard Stiern
Best Retics	<i>Arcadia</i>	Sergio and Elsie Bracci
Runner-up	<i>Valley Knudsen</i>	D. T. Gray Family
Best Non-Retics	<i>Kramer's Fluted Coral</i>	Mr. and Mrs. B. M. Pace
Runner-up	<i>Waltz Time</i>	Marvin Belcher
Best Species	<i>Star Above Star</i>	Capt. and Mrs. Ben Berry
Best Special Culture Japonicas	<i>Cherry Jubilee</i>	Sergio and Elsie Bracci
Runner-up	<i>Katy Var.</i>	Al and Frances Gomper
Best Retics Special Culture	<i>Nuccio's Ruby</i>	Sergio and Elsie Bracci
Runner-up	<i>Harold Paige</i>	Sergio and Elsie Bracci
Best Special Culture Hybrids	<i>Elsie Jury</i>	Les Baskerville
Runner-up	<i>Charlene Var.</i>	Arlene and Lee Chow
Best New Seedlings		Bea Mackall (Kramer Bros. Nursery)
Best Grafted Plant	<i>Bella Romano</i>	Mrs. Edalee Harwell
Best Novice	<i>Ville de Nantes</i>	John Bolger
Runner-up	<i>Spring Sonnet</i>	Barbara Geer
Best Camellia Plant in Bloom		
— One Gal.	<i>Tom Knudsen</i>	Ben Woodward
Best Camellia Plant in Bloom		
— Two Gal.	<i>Francie L. Var.</i>	Les Baskerville

Court of Honor

Miss Charleston Var.
 Kitty
 Cornelian
 Freedom Bell
 Julia France
 String of Pearls
 Nuccio's Gem
 Valley Knudsen
 Lady Laura
 Ava Maria
 Little Slam Var.
 South Seas
 Dr. Clifford Parks
 Kramer's Supreme
 Jenny Mills
 Buddha
 Fire Chief Var.
 Wildfire

Herman Belcher
 Arlene and Lee Chow
 Sergio and Elsie Bracci
 Marvin Belcher
 Marvyn Belcher
 Arlene and Lee Chow
 Mr. and Mrs. R. I. Jaacks
 Caryll Pitkin
 Arlene and Lee Chow
 Arlene and Lee Chow
 Herman Belcher
 Mr. and Mrs. R. L. Jaacks
 Mr. and Mrs. Roger Bourland
 D. T. Gray Family
 Arlene and Lee Chow
 Mr. and Mrs. Stanley Miller
 Mr. and Mrs. Roger Freischel
 Mr. and Mrs. R. L. Jaacks



John Nichols
 San Diego
 Show Chairman

SHOW RESULTS TEMPLE CITY SHOW 1986

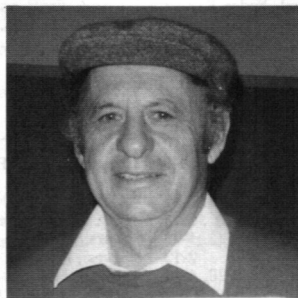
<i>Trophy</i>	<i>Variety</i>	<i>Winner</i>
Best Non-Treated Large Japonica	<i>Tomorrow Park Hill</i>	Mr. and Mrs. Caryll Pitkin
Runner-up	<i>Adolphe Audosson Special</i>	Mr. and Mrs. Sergio Bracci
Best Non-Treated Medium Japonica	<i>Eleanor Martin Supreme</i>	Mr. and Mrs. Milton Schmidt
Runner-up	<i>Ballet Dancer</i>	Dr. and Mrs. Lee Chow
Best Non-Treated Small Japonica	<i>Baby Pearl</i>	Rudy Moore
Runner-up	<i>Marchioness of Salisbury</i>	Mr. and Mrs. Sergio Bracci
Best Non-Treated Minitature Japonica	<i>Fircone Var.</i>	Dr. and Mrs. Lee Chow
Runner-up	<i>Kewpie Doll</i>	Mr. and Mrs. Grady Perigan
Best Non-Treated Non-Reticulata Hybrid	<i>Angel Wings</i>	Herman Belcher
Runner-up	<i>Julia Hamiter</i>	Marvyn Belcher
Best Treated Non-Reticulata Hybrid	<i>Julia Hamiter</i>	Mr. and Mrs. Sergio Bracci
Runner-up	<i>South Seas</i>	Mr. and Mrs. Ab Summerson
	Star Above Star	Mr. and Mrs. Robert McNeil
Best Treated Japonica	<i>Wildfire</i>	Mr. and Mrs. Robert Jaacks
Runner-up	<i>Tomorrow Park Hill</i>	Mr. and Mrs. Sergio Bracci
Best Treated Reticulata Hybrid	<i>Pharaoh</i>	Mr. and Mrs. Sergio Bracci
Runner-up	<i>Harold Paige</i>	Mr. and Mrs. Sergio Bracci

Best Treated Reticulata Hybrid	<i>Nuccio's Ruby Var.</i>	Mr. and Mrs. Pat Novak
Runner-up	<i>Emma Gaeta</i>	Mr. and Mrs. Berkeley Pace
Best Three Large Japonicas	<i>Elegans Champagne</i>	Mr. and Mrs. Ab Summerson
Runner-up	<i>Grand Prix</i>	Mr. and Mrs. Sergio Bracci
Best Three Medium Japonicas	<i>Jenny Mills</i>	Dr. and Mrs. Richard Stiern
Runner-up	<i>Sawada's Dream</i>	Dr. and Mrs. Richard Stiern
Best Three Boutonniere Japonicas	<i>Alison Leigh Woodroof</i>	Dr. and Mrs. Robert Stiern
Runner-up	<i>Maroon and Gold</i>	Chuck Gerlach
Best Three Reticulata Hybrids	<i>Al Gunn</i>	Mr. and Mrs. Sergio Bracci
Runner-up	<i>Dr. Clifford Parks</i>	Mr. and Mrs. Robert Jaacks
Best Three Non-Reticulata Hybrids	<i>South Seas</i>	Mr. and Mrs. Sergio Bracci
Runner-up	<i>Waltz Time Var.</i>	Dr. and Mrs. Richard Stiern
Best Three Mixed Varieties	<i>Curtain Call</i>	Chuck Gerlach
Runner-up	<i>Tomorrow Park Hill</i>	Mel Belcher
Best Five Large Japonicas	<i>Swan Lake</i>	Dr. Lee Chow
Runner-up	<i>Grand Prix</i>	Mr. and Mrs. Ab Summerson
Best Five Medium and Smaller Japonicas	<i>Hishi Karaito</i>	Marvin Belcher
Runner-up	<i>Jenny Mills</i>	Dr. and Mrs. Richard Stiern
Best Five Hybrids	<i>Dr. Clifford Parks</i>	Mr. and Mrs. Sergio Bracci
Runner-up	<i>Francie L.</i>	Mr. and Mrs. Sergio Bracci
Best Seedling Japonica	<i>Karina</i>	Mr. and Mrs. John Movich
Best Novice Large Japonica	<i>Margaret Davis</i>	Carol Albrigo

Court of Honor

Kramer's Supreme
Tiffany
Dr. Clifford Parks
Showtime
Guilio Nuccio
Elegans Splendor
Grand Prix Var.
Francie L.
Harold Paige
Kohinor
Curtain Call
Pink Dahlia
Elsie Jury
Magnoliaflora
Dixie Knight Supreme
Jenny Mills
Hishi-Karaito
Tom Thumb
Little Michael
Little Poppy

D. T. Gray Family
 Mr. and Mrs. B. Pace
 Mr. and Mrs. R. Jaacks
 Mr. and Mrs. B. Pace
 Mr. and Mrs. B. Pace
 Dr. and Mrs. Lee Chow
 Mr. and Mrs. Grady Perigan
 Mr. and Mrs. B. Pace
 Palmer Groenewold
 Palmer Groenewold
 Mr. and Mrs. Ab Summerson
 B. Pace
 L. Gaeta
 Dr. Lee Chow
 Erwin Verity
 Dr. Lee Chow
 Dr. Lee Chow
 J. E. Christinson
 Marvin Belcher
 Erwin Verity



Sergio Bracci
Temple City
Show Chairman

INDEX OF CAMELLIA REVIEW
Volume #47 — September-October, 1985 — March-April, 1986

ARTICLES

The Bracci's, Pat Greutert	13
California Camellia-Rama XI 1985, Mary Anne Ray	10
Camellias As A Living Memorial, Margaret Macdonald-Ingram	9
1985 Camellia Awards	16
Camellia Pests & Diseases, Tom Nuccio	18
Camellia Trivia, Ernie Pieri	10
Caryll Pitkin, Pat Greutert	7
C. Chrysantha Classification Dilemma, Bill Donnan	6
Color Me Pink, Bill Donnan	10
Contributors To The Camellia Nomenclature Fund	5
Contributors To The Camellia Review Fund	5
A Discussion Of Bloom Size Variation, Bill Woodroof & Bill Donnan	6
Garden Doctor, Paul B. Engler	11
Garden Plants Can Be Unhealthy For Children	24
Getting Buds To Open, Bill Donnan	6
Grafting, Jack Osegueda	15
Hey Mom! We're Home!, Howard E. Burnette	8
Hot Pots, Thomas Lee	24
International Camellia Society Congress In Australia — September 1986	3
Landscaping With Camellias, The Camellia Journal 1984	23
Letter To The Editor, Milton H. Brown	10
Letters To The Editor	
The Open Show, Marilee Gray	20
Collective Epithets, Tom Savige	21
Letters To The Editor, Trehane, Donnan	18
Managing Soil And Root Ecology In The Garden, Martin F. Stoner, Ph.D.	21
Modesto Camellia Society 1985 Show Results	24
The 'Naming' Dilemma, Houghton S. Hall	22
New Zealand Camellia Society	15
"Open" The Show & You Lock Us Out, Richard A. Stiern	21
Oregon Camellia Society	13
Pacific Camellia Society, Bob & Alice Neely	12
Pacific Camellia Society Picnic, Chuck Gerlach	13
Pacific Meeting, Grady Perigan	6
Please Listen To Me	10
Pomona Valley Performers, Marilee Gray	11
Pruning, Dr. T. E. Pierson	19
Pruning Time Will Soon Be Here, The Camellia Journal, February 1985	20
Questions & Answer Program, Marilee Gray/Sergio Bracci	15
Recognition, Jim Randall	11
Rediscovery of Old Camellia Varieties, Antonio Sevesi	8
San Diego Camellia Society	14
Sasanquas, Sunset 12/85	9
Sex & The Single Species, Bill Donnan	3
Show Results — Central California, Delta, Huntington, Kern, Pomona, South Coast, San Diego, Temple City	14
Show Results, Pacific Gib Show	22
Show Schedule 1985 & 1986	1-24, 3-24
The Top Singles of 1985, Don Bergamini	16
A Trip To Paradise, Sergio Bracci	3
Vanishing Membership, Andrew F. Sears	9
The Wanderings of Johnny Appleseed, Fedco Reporter	18
Who Has 'Breschini's Pride', H. Simon	23
Working With Yellow, Meyer Piet	6

AUTHORS

Bergamini, Don	1-16	Osegueda, Jack	2-14
Bracci, Sergio	1-3, 3-15	Perigan, Grady	4-6
Brown, Milton H.	4-10	Pieri, Ernie	2-10
Burnette, Howard E.	4-8	Pierson, Dr. T. E.	2-19
Donnan, Bill	1-10, 1-18, 2-6, 3-3, 3-6, 4-6	Piet, Meyer	1-6
Dryden, Harold	2-3	Randall, Jim	1-11
Engler, Paul B.	2-11	Ray, Mary Anne	3-10
Hall, Houghton S.	1-22	Sears, Andrew	2-9
Gerlach, Chuck	2-13	Sevesi, Antonio	2-8
Gray, Marilee	3-15, 3-20, 4-11	Simon, H.	1-23
Greutert, Pat	1-13, 3-7	Stiern, Richard A.	1-21
Lec, Thomas	3-24	Stoner, Martin F., Ph.D.	2-21
Macdonald-Ingram, Margaret	4-9	Trehane, David C.	1-18
Neely, Bob & Alice	1-12	Woodroof, Bill	4-6
Nuccio, Tom	3-18		

Directory of Other California Camellia Societies

CAMELLIA SOCIETY OF KERN COUNTY—President, Marvin Belcher; Secretary, Nadine Wade, 172 N. Jaye Street, Porterville 93257. Meetings: To be announced.

CAMELLIA SOCIETY OF MODESTO—President, Harlan Smith; Secretary, Merry Harris, 416 Maple St., Modesto 95351. Meetings: 2nd Tuesday, November through April, 7:30 p.m., Centenary Methodist Church, Room 6 Norwiegan & McHenry Avenues, Modesto.

CAMELLIA SOCIETY OF ORANGE COUNTY—President, William McGrath; Secretary, Mrs. Frances L. Butler, 1831 Windsor Lane, Santa Ana 92705. Meetings: 3rd Thursday, November through April, California Federal S & L Bldg., 1802 North Main Street, Santa Ana.

CAMELLIA SOCIETY OF SACRAMENTO—President, Thomas Lee; Secretary, Mrs. Lana Paulhamus, 1909 Discovery Way, Sacramento 95819. Meetings: 7:30, October 23, November 22, December 18, 1985; January 22, February 26 and March 26, 1986, Shepard Garden & Arts Center, 3330 McKinley Blvd.

CENTRAL CALIFORNIA CAMELLIA SOCIETY—President, Mary Ann Ray; Secretary, Ruth Ann Lewis, 6440 Sequoia Dr., Fresno 93711. Meetings: 3rd Wednesday, November through February, Sheraton Smugglers Inn, Fresno.

DELTA CAMELLIA SOCIETY—President, Jack Lewis; Secretary, Nancy Pitts, 2606 Desrye Blvd., Antioch 94509. Meetings: 2nd Tuesday, November through March, Oak Grove School, 2050 Minert Rd., Concord

LOS ANGELES CAMELLIA SOCIETY—President, Ernie Pieri; Secretary, Warren Dickson, 1935 Apex Ave., Los Angeles 90039. Meetings: 2nd Tuesday, December through April, Union Federal Savings & Loan, 2450 Glendale Blvd., Los Angeles 90039.

NORTHERN CALIFORNIA CAMELLIA SOCIETY—President, Don Bergamini; Secretary, David L. Hagmann, 464 Camino Sobrante, Orinda, 94563. Meetings: 1st Monday, November through April. Heather Farm Community Center, 301 N. San Carlos Drive, Walnut Creek.

PACIFIC CAMELLIA SOCIETY—President, Dean Alltizer; Secretary, Marcie Alltizer, 1253 Bruce Ave., Glendale, 91202. Meetings: 1st Thursday, November through April, 7:30 p.m., Descanso Gardens.

PENINSULA CAMELLIA SOCIETY—President, Bill Lockwood; Secretary, Cameron Ainsworth, 3879 Vineyard Dr., Redwood City 94061. Meetings: 4th Tuesday, October through March, Ampex Cafeteria, 411 Broadway, Redwood City.

POMONA VALLEY CAMELLIA SOCIETY—President, Ann Geerken; Secretary, Dorothy Christinson, 3751 Hoover St., Riverside 92504. Meetings: 2nd Thursday, November through April, Pomona First Federal S & L, Pomona.

SAN DIEGO CAMELLIA SOCIETY—President, Palmer Groenewold; Secretary, Edalee Harwell, 2165 Leon Ave., San Diego 92154. Meetings: 3rd Wednesday, October through April, Casa Del Prado, Room 101, Balboa Park, San Diego.

SANTA CLARA COUNTY CAMELLIA SOCIETY—President, George Avery; Corresponding Secretary, Mrs. John Augis, 2245 Fairvalley Court, San Jose 95125. Meetings: 2nd Wednesday, October through April, Allstate Savings, 1304 Saratoga Ave., San Jose.

SONOMA COUNTY CAMELLIA SOCIETY—Correspondent, Jim Grant, 3282 Coffey Lane, Santa Rosa 95401.

SOUTH COAST CAMELLIA SOCIETY—President, Dr. Glenn Burroughs; Secretary, Pauline Johnson, 1251 10th St., San Pedro 90731. Meetings: 3rd Tuesday, October through May, 7:30 p.m., South Coast Botanic Gardens, 26300 Crenshaw Blvd., Palos Verdes Peninsula 90274.

TEMPLE CITY CAMELLIA SOCIETY—President, Marion Schmidt; Secretary, Alice Jaacks, 5554 N. Burton Ave., San Gabriel 91776. Meetings: 3rd Thursday, Nov. 21, Ayres Hall; 4th Thursday, January through March, Lecture Hall; 4th Thursday, April 24, Ayres Hall.

SOUTHERN
CALIFORNIA
CAMELLIA
Society, Inc.

POST BOX 50525
PASADENA, CA 91105

MR EDWARDS H METCALF
P O BOX 3975
NORTH HOLLYWOOD CA 91609

4

Bulk Rate
U.S. Postage
PAID
Permit No. 740
Pasadena, CA

Return Postage Guaranteed